

FLOORPLANS & Elevations



The Cary
Elevation "C"



Elevation "B"
w/ Optional Bonus Room



Elevation "D"
w/ Optional Bonus Room



Elevation "A"

"Eastwood Homes, That's My Builder."

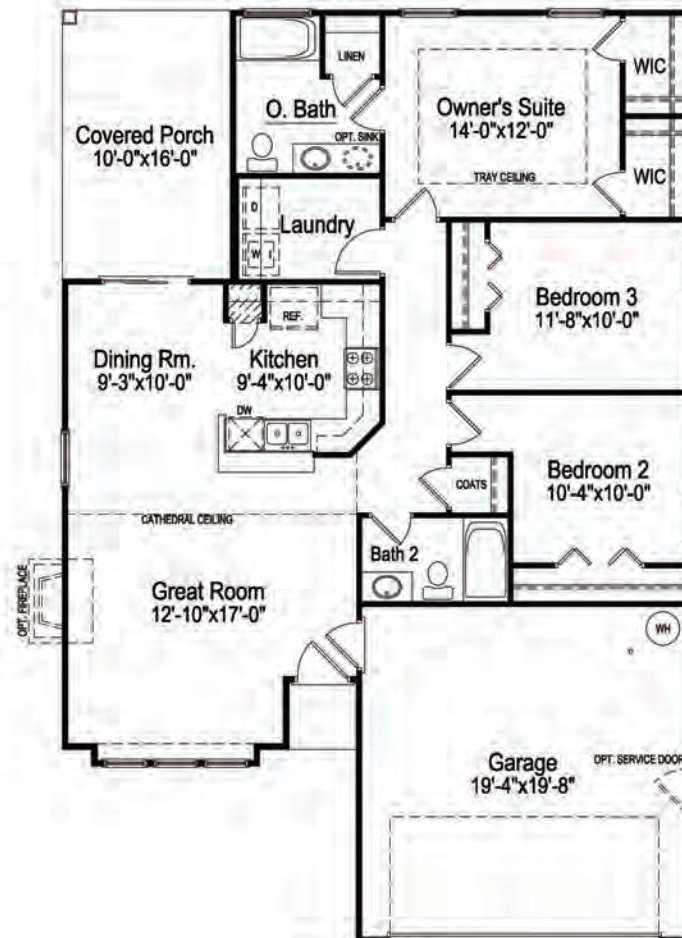


The Cary

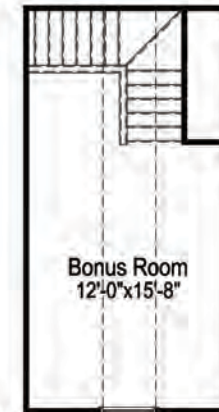
An Innovative and Open Floor Plan . . .

- Contemporary open ranch floor plan with great flow.
- Owner's Suite with tray ceiling.
- Cathedral ceilings in great room, dining room & kitchen.
- Laundry Room conveniently located near bedrooms.

5 Piece Bath Option



First Floor



Optional Bonus Room

Distinctive Design Features . . .

- Large covered porch at rear of home.
- Option for bonus room above garage.

Floorplans reflect typical approximate dimensions. Features may vary by series specifications. We reserve the right to make changes without notice.