

GENOA

THREE STORY TOWNHOME FEATURES

2,068 SF

3 Bedrooms | 2.5 or 2.5 + .5 Baths | 2 Car Garage

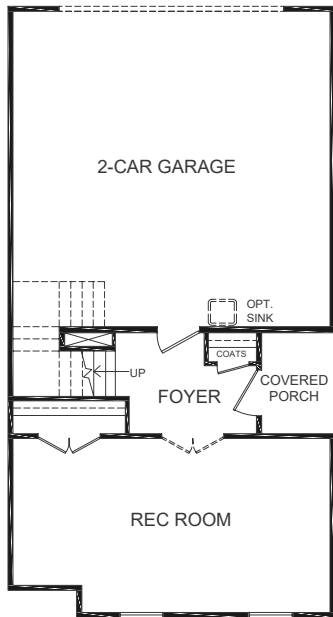


built with care.

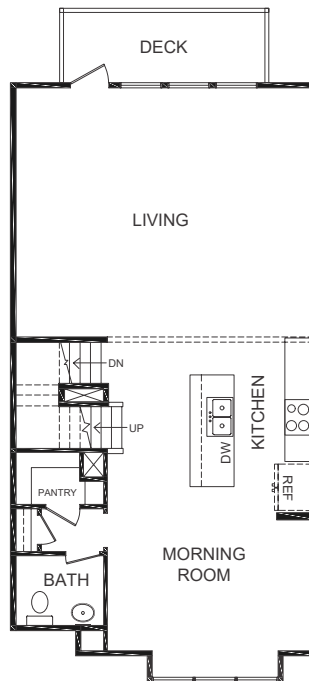
The Genoa is a spacious end-unit townhome. It features three bedrooms and two-and-a-half bathrooms but can be customized to have two primary suites with two full bathrooms and two half bathrooms. The lower level has a recreation area that can be personalized with French doors and a half bath. The main floor features an open concept design with a large living room leading to a deck. The kitchen has a sizable island, and the morning room's bay window adds to the sense of space.



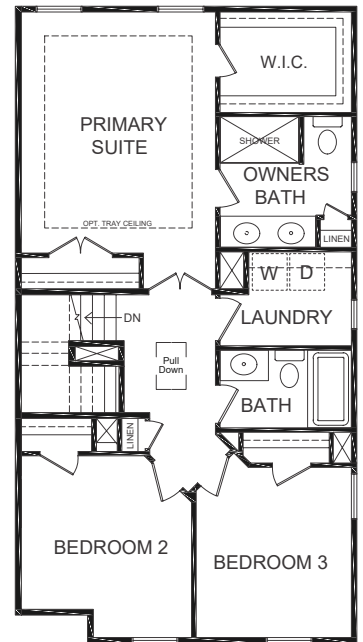
GROUND FLOOR



MAIN FLOOR

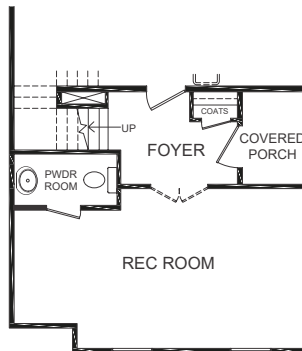


UPPER FLOOR

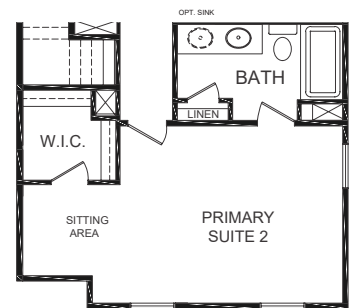


INTERIOR

REC W/ BATH OPTION



DUAL PRIMARY SUITES



Marketing & Sales by Berkshire Hathaway HomeServices RW Towne Realty | 757-935-9010



2025 BHH Affiliates, LLC. An independently owned and operated franchisee of BHH Affiliates, LLC. Berkshire Hathaway HomeServices and the Berkshire Hathaway HomeServices symbol are registered service marks of Columbia Insurance Company, a Berkshire Hathaway affiliate. Equal Housing Opportunity. Berkshire Hathaway HomeServices RW Towne Realty is an affiliate of TowneBank and licensed in the states of Virginia and North Carolina.



INCLUDED FEATURES for the Genoa Model

THE PERSONAL TOUCH	<ul style="list-style-type: none"> • Our Personal Site Builder Program schedules meetings with your Personal Site Builder during the construction process and includes Pre-Construction and Framing Conferences • Buyer Orientation-Day of closing with your Personal Site Builder to familiarize yourself with your new home • Pre-Settlement Orientation Final Walk-Through • Final Walk-Through 	<ul style="list-style-type: none"> • Floor plans designed with everyday living in mind • Spacious interiors with 8' ceilings on ground level and 9' on main and upper levels. • LVP flooring in the foyer • Choice of plush carpet with quality pad • No-wax vinyl floor in all Bathrooms, Kitchen, and Laundry • Custom textured walls and ceilings (except kitchen and baths) • Choice of designer-selected interior paint color packages • Camden 2-panel door style cabinetry • Satin Stainless finish interior door hardware • Designer-selected light fixture packages in your choice of Brushed Nickel or Matte Black finish • Rocker switches throughout home • Custom-designed closets and pantry with ventilated shelving • Fully hung, finished, and painted 2-car garage walls & ceiling • Pre-wired for garage door opener • Laundry with connections for full-size washer and dryer • Pre-wired for ceiling fan in Family Room, Primary and Secondary Bedrooms, Ground Level Study/Rec Room • Primary Suite includes walk-in and secondary closets • Ground fault interrupter circuits for Kitchen, Bathrooms, Garage, and exterior outlets • Dual internet feeds for additional providers • Advanced home structured wiring package includes HDMI outlet in Living Room, Advanced outlet (multi port) in Kitchen, Cable/Data in Bedrooms (per plan). • USB stacked outlet in Bedrooms and Kitchen • Direct-wire smoke detectors and carbon monoxide detector • Home automation module
INVITING EXTERIORS	<ul style="list-style-type: none"> • Picturesque street trees and planting throughout the community • Concrete Slab Foundation • Designer-selected exterior Color Packages • Low-maintenance exterior with premium vinyl siding and stone accents (per plan) • Metal Wrapped Cornice-Vinyl Soffits • 30-year Architectural roof shingles • Seamless aluminum gutters and downspouts (per plan) • Fiberglass front entry door • Decorative satin stainless handle set on front entry door • Security deadbolt on front and rear doors • Hose connection at garage • Three weatherproof receptacles (front door, garage and deck) • Insulated decorative raised panel metal garage doors with glass • Professionally landscaped with shrub package and sodded common area • Termite treatment - Bore Care System • Hurricane fasteners on each rafter • Underground utilities • Mailbox Cluster 	<ul style="list-style-type: none"> • Energy-efficient tankless gas hot water heater • Energy efficient gas heat and 15 Seer HVAC system • Digital programmable thermostat • Energy-efficient vinyl Low-E windows with tilt sash and screen • All windows, doors, and penetrations sealed and caulked • House wrap infiltration barrier • Fully weather-stripped insulated exterior doors • R-49 blown insulation in flat ceilings • R-15 batt insulation in exterior walls • Energy Sense Home
INSPIRING KITCHENS	<ul style="list-style-type: none"> • Oversized island with ample space for seating • Spacious Pantry • Custom-designed birch Kitchen cabinets in a choice of finish with 42" wall cabinets with adjustable shelves and crown molding around Bump-up • Choice of level 1 granite countertops • Choice of 3 under-mount stainless steel sinks with single handle pull down chrome faucet sprayer • Recessed lighting • Ice Maker hookup • Stainless Steel appliances including smooth top electric range, built-in microwave with vented hood, dishwasher, and disposal 	<ul style="list-style-type: none"> • Community clubhouse with fitness center, pool and fire pit • Community playground • Community dog park • Community walking trails • Community pocket parks
BATHS	<ul style="list-style-type: none"> • Luxurious Primary Bath with double bowl adult height vanity, fiberglass shower, vinyl floor, cultured marble counter top • Elongated toilets in all baths • Easy clean fiberglass tub / shower in secondary bath(s) • Adult height single vanity with cultured marble countertop in secondary baths • Delta chrome plumbing fixtures. 	<ul style="list-style-type: none"> • Our Family Building Homes for Your Family since 1977 • Nationally known 2-10 Home Buyer Warranty • Full In-House Warranty and Customer Service Department • One year warranty on your full home • Two year mechanical systems warranty