

PORTOFINO

TWO STORY TOWNHOME FEATURES

1,530 SF

3 Bedrooms | 2.5 Baths | 1 Car Garage

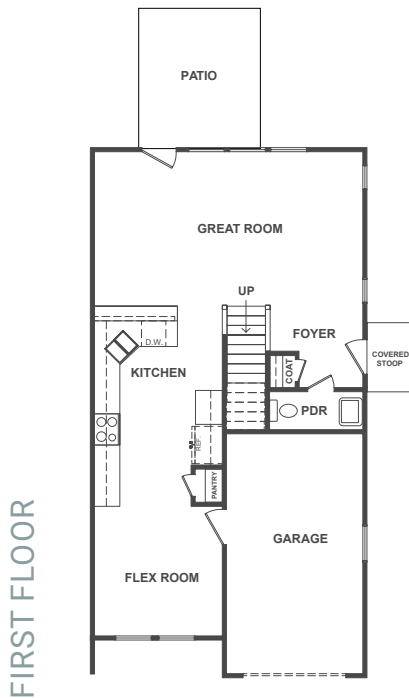


built with care.

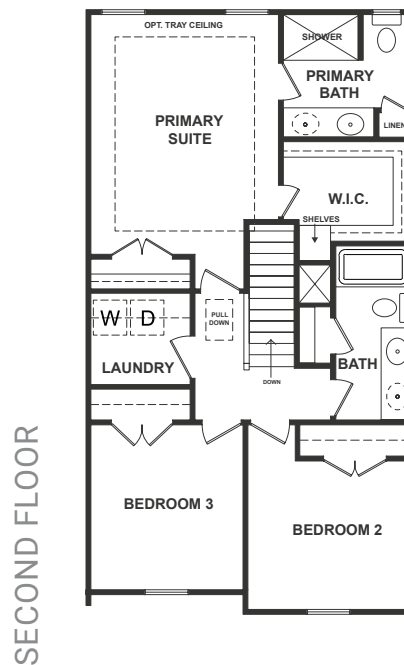
The Portofino offers a well-designed, flowing living space. This end-unit model has a side entrance leading to a spacious great room and a large kitchen with ample counter space. There's also a flex room with plenty of natural light, suitable for a breakfast area or home office. The primary suite is impressive, with a spa-like bath and two roomy closets. Upstairs, there's a laundry room, and the two secondary bedrooms can be transformed into a comfortable secondary suite with a sitting area, its own walk-in closet, and bath. A spacious garage and a private patio complete this unique home.



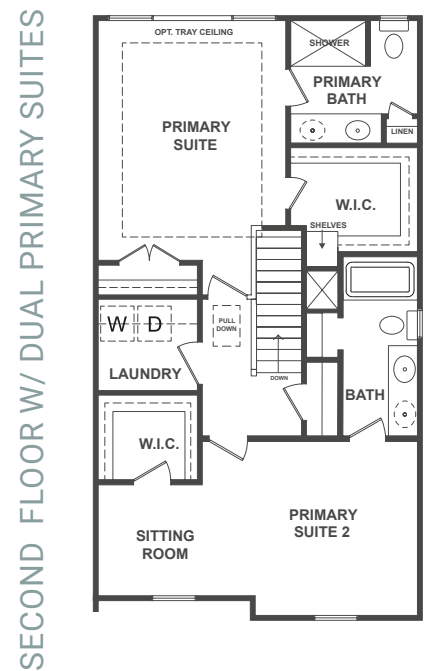
EXTERIOR



FIRST FLOOR



SECOND FLOOR



SECOND FLOOR W/ DUAL PRIMARY SUITES



Marketing & Sales by Berkshire Hathaway HomeServices RW Towne Realty | 757-935-9010

2025 BHH Affiliates, LLC. An independently owned and operated franchisee of BHH Affiliates, LLC. Berkshire Hathaway HomeServices and the Berkshire Hathaway HomeServices symbol are registered service marks of Columbia Insurance Company, a Berkshire Hathaway affiliate. Equal Housing Opportunity. Berkshire Hathaway HomeServices RW Towne Realty is an affiliate of TowneBank and licensed in the states of Virginia and North Carolina.

