

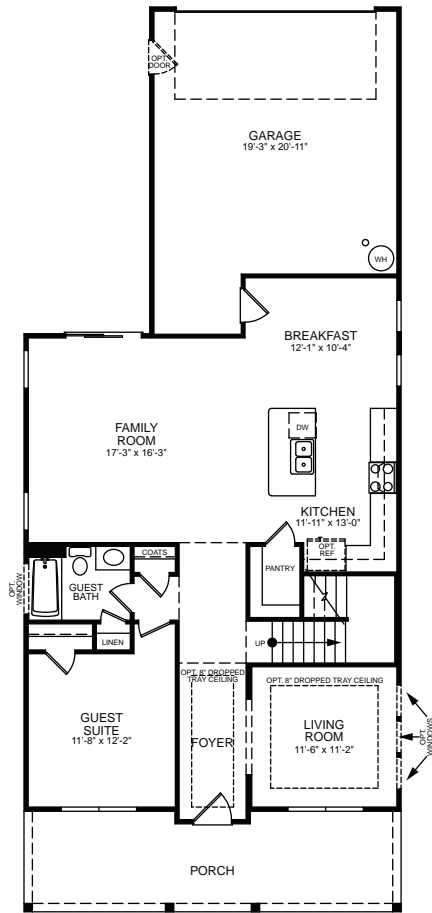


## *The Abbeyville*

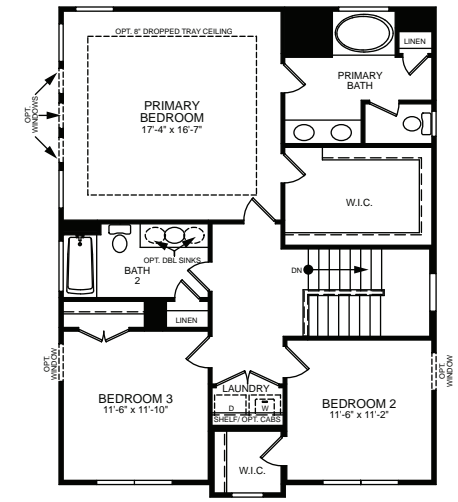
4 Bed / 3 Bath  
2 Car Alley Entry Garage on Slab



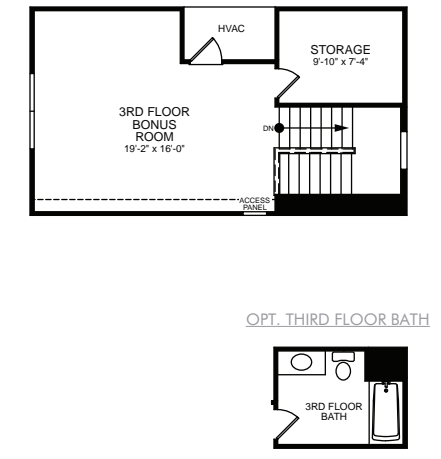
**The Abbeyville • First Floor Plan**



**Second Floor Plan**

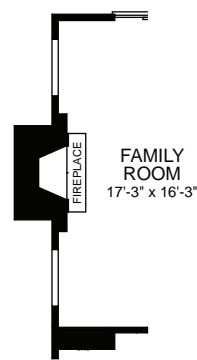


**Opt. Third Floor**

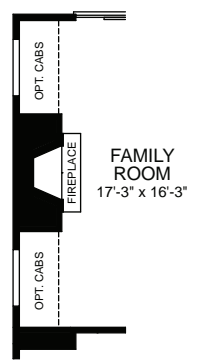


**First Floor Options**

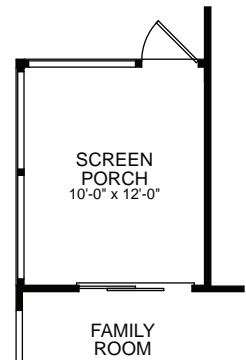
OPT. SIDE FIREPLACE



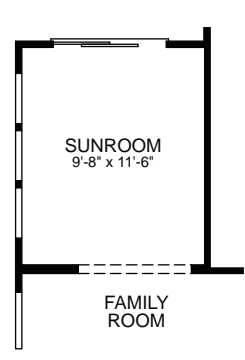
OPT. INTERIOR FIREPLACE



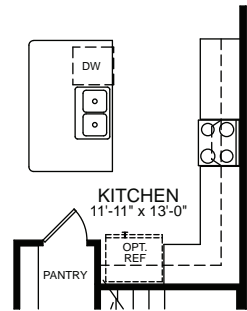
OPT. SCREEN PORCH



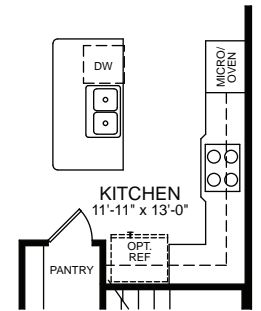
OPT. SUNROOM



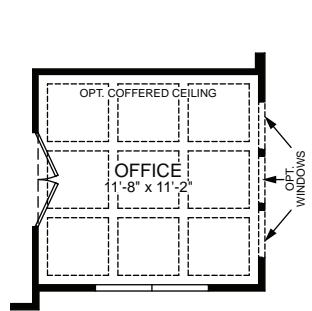
OPT. ISLAND



OPT. DESIGNER KITCHEN

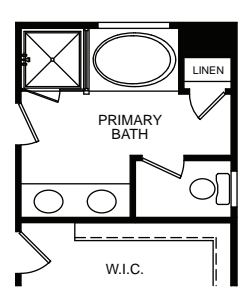


OPT. OFFICE

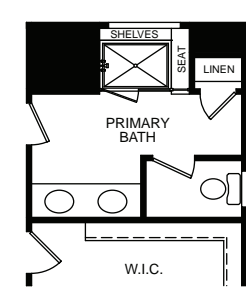


**Second Floor Options**

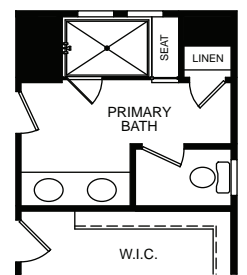
OPT. FIVE PIECE PRIMARY BATH



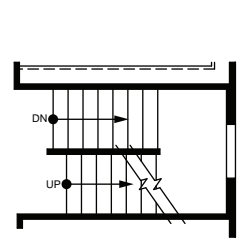
OPT. SHOWER AT PRIMARY BATH



OPT. LUXURY SHOWER AT PRIMARY BATH



OPT. STAIRS TO OPT. THIRD FLOOR



**Third Floor Option**

OPT. THIRD FLOOR WITH BEDROOM 4/BATH 3

