

The Estates at Nansemond River INCLUDED FEATURES

MARINO

3-4 Bedrooms • 3-4 Bathrooms • 2,334-2,936 Sq. Ft. • 2-3 Car Garage

OUR TOUCHES	<ul style="list-style-type: none"> Personalization: Choose upgrades and options to personalize your home and lifestyle Home Buyer Seminar: Ensure smooth home buying experience Personal site builder meetings: Pre-construction and framing conferences Buyer Orientation: On closing day, you'll meet your personal site builder for a comprehensive walkthrough of your new home.
INVITING EXTERIORS	<ul style="list-style-type: none"> Picturesque street trees and community planting Raised concrete slab foundation w/ brick skirt Designer-selected exterior color packages Low-maintenance exterior: Premium James Hardie Cement Siding Concrete 10 X 12 patio (per plan) Metal wrapped cornice and vinyl soffits 30-year architectural roof shingles Seamless aluminum gutters and downspouts Fiberglass front entry door with satin stainless hardware finish Security deadbolt on front and rear doors Front and rear hose connections Two weatherproof receptacles (front and rear) Insulated decorative raised panel metal garage doors with glass Professionally landscaped lawn with nursery tree, shrub package, and sodded front yard Termite treatment: Bore Care System Hurricane fasteners on each rafter Underground utilities Mailbox cluster Community sidewalks
KITCHENS	<ul style="list-style-type: none"> Eat-in kitchen with island for extra seating & pantry Custom-designed birch cabinets in choice of stained finish with 42" wall cabinets, adjustable shelves and soft close doors with crown molding around bump-up over the range Choice of level 1 granite or quartz countertops Choice of 3 under-mount stainless steel sinks with single-handle pull-down stainless faucet sprayer Pendant lights over island with additional recessed lighting Ice maker hookup Stainless steel GE appliances: smooth top electric range, built-in microwave with vented hood, dishwasher, and disposal
BATHS	<ul style="list-style-type: none"> Luxurious primary bath: Double bowl adult height vanity, full ceramic tile shower with brushed nickel trimmed clear doors, ceramic tile flooring, level 1 granite or quartz countertop, and comfort height elongated toilet Elongated toilets in secondary baths Easy-clean fiberglass tub/shower in secondary bath(s) Adult height single vanity with level 1 granite or quartz countertop in secondary baths Moen stainless plumbing fixtures
INTERIORS WITH PERSONALITY	<ul style="list-style-type: none"> Spacious interiors: 9' ceilings on first floor LVP flooring in foyer Choice of plush carpet No-wax vinyl floor in secondary bathrooms, kitchen, laundry and family entry Direct-vent gas fireplace in family room with mantel and beautiful slate surround "Knock down" textured walls and ceilings (excluding kitchen and bath walls) Family entry with built-in bench and cubby (per plan) Choice of designer-selected interior paint color packages Choice of 3 raised panel door styles Satin stainless finish door hardware Designer-selected light fixture packages in brushed nickel or matte black Rocker switches throughout home Custom-designed closets and pantry with ventilated shelving Fully finished 2-car garage with pre-wired opener Copper wiring through out Laundry with full-size washer and dryer connections and folding shelf (per plan) Pre-wired for ceiling fans in the family room, primary bedroom, loft, first floor study and secondary bedrooms (per plan) Primary Suite includes walk-in closet with ventilated shelving Ground fault interrupter circuits in kitchen, bathrooms, garage, and exterior outlets Dual internet feeds Advanced home structured wiring package includes: One large sized structural wiring cabinet (video,telco, & Cat=5); One HDMI outlet with advanced outlet in family room; cable/data outlets in the primary bedroom, and all secondary bedrooms USB/USB-C stacked outlet in bedrooms and kitchen Direct-wire smoke detectors and carbon monoxide detector Home automation module Pull-down attic stairway (per plan)
ENERGY EFFICIENCY	<ul style="list-style-type: none"> Energy-efficient tankless gas hot water heater Energy-efficient gas heat and 15 SEER HVAC system Digital programmable thermostat Energy-efficient vinyl Low-E windows with tilt sash and screens Sealed and caulked windows, doors, and exterior penetrations House wrap infiltration barrier Fully weather-stripped insulated exterior doors R49 Insulation in the Attic, R-15 Insulation in Exterior Walls, R19 Insulation in 2 X 6 walls and R19 Insulation in Floor of Living Space over Garage Energy Sense Home
OUR COMMITMENT	<ul style="list-style-type: none"> Our family has been building homes since 1977 Nationally known 2-10 Home Buyer Warranty Full in-house warranty and customer service department One year warranty on your full home Two year mechanical systems warranty



built with care.

All prices, plans, elevations, features, specifications, and materials are subject to change without notice or obligation. Eastwood Homes continuously strives to improve our product; therefore, we reserve the right to change or discontinue architectural details and designs and interior colors and finishes without notice. Our brochures and images are for illustration only, are not drawn to scale, and may include optional features that vary by community. Room dimensions are approximate. Please see contract for additional details.

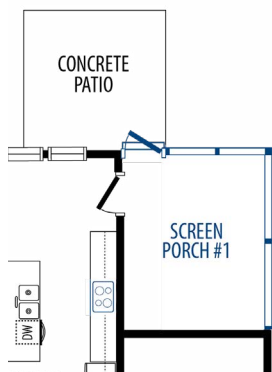
MARINO

FIRST FLOOR

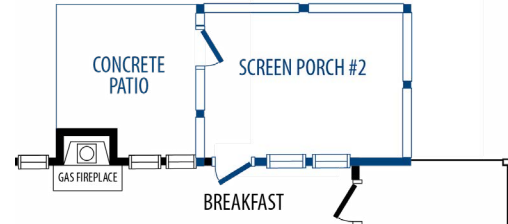


FIRST FLOOR OPTIONS

OPTION SCREEN PORCH #1

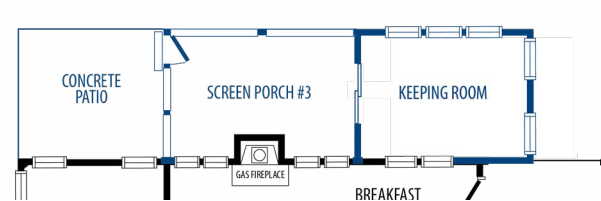


OPTION SCREEN PORCH #2



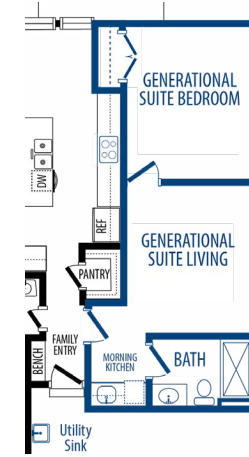
OPTIONAL SUNROOM ALSO AVAILABLE

OPTION KEEPING ROOM W/ SCREEN PORCH #3

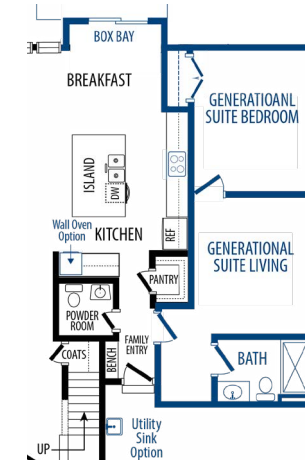


FIRST FLOOR

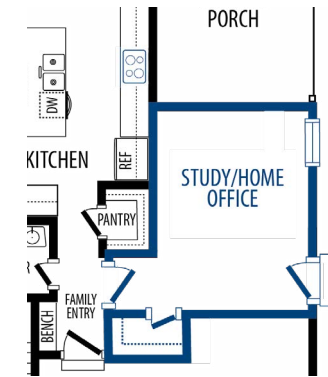
OPTION GENERATIONAL SUITE W/ MORNING KITCHEN



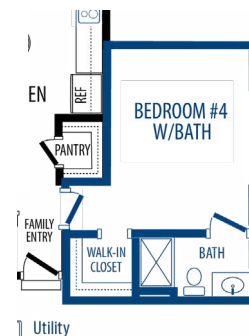
OPTION GENERATIONAL SUITE W/BOX BAY & SLIDING DOORS



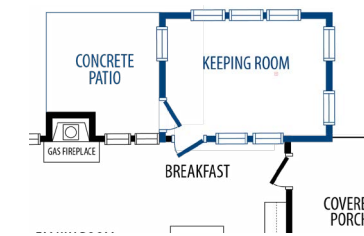
OPTION STUDY/HOME OFFICE



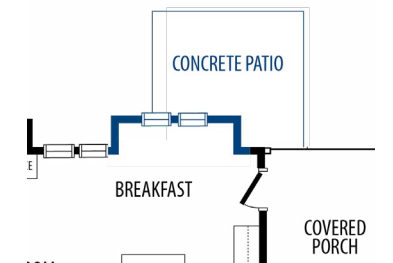
OPTION BEDROOM #4 W/FULL BATH



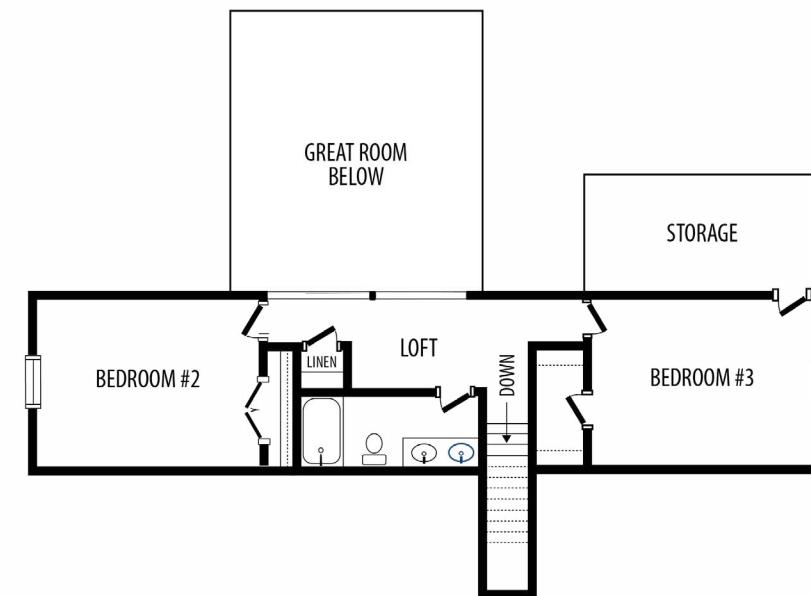
OPTION KEEPING ROOM



OPTION BOX BAY EXTENSION

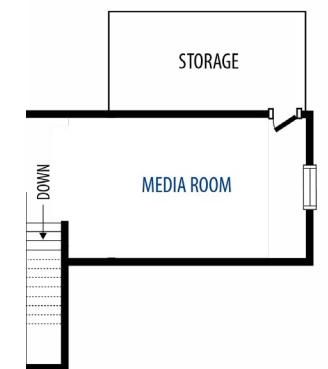


SECOND FLOOR



SECOND FLOOR OPTION

OPTION MEDIA ROOM OPTION



All floorplans are based on the Traditional Elevation • Items shown in blue are optional upgrades available for an additional fee.

Marketing & Sales by Berkshire Hathaway HomeServices RW Towne Realty | 757-935-9010
 2025 BHH Affiliates, LLC. An independently owned and operated franchisee of BHH Affiliates, LLC. Berkshire Hathaway HomeServices and the Berkshire Hathaway HomeServices symbol are registered service marks of Columbia Insurance Company, a Berkshire Hathaway affiliate. Equal Housing Opportunity. Berkshire Hathaway HomeServices RW Towne Realty is an affiliate of TowneBank and licensed in the states of Virginia and North Carolina